



Early booking is recommended due to limited availabilities



## Bourg-en-Bresse Saint-Pierre

St-Pierre boarding school is located in the center eastern France, close to Lyon (1h20 by train). Being a student there means living in an eco-friendly, quiet and dynamic environment. This program perfectly suits for motivated students who would also like to attend extracurricular activities.

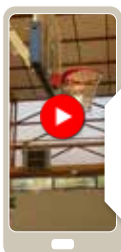
- ▶ **Number of students:** 709
- ▶ **Part of international students:** 2,5%
- ▶ **Baccalaureat success rate:** 99,4%
- ▶ **French as a foreign language course included:** 3h per week (included)
- ▶ **Durations offered:** Academic year from September, Semester from September and January depending on availabilities
- ▶ **Number of WEP students per classroom:** average of 1
- ▶ **School uniform:** no
- ▶ **Religion classes:** catholic (optional)

### Why is this school appreciated for?

For the number of activities students can attend at school or in town.

### Good to know

School only available for students as of grade 10.



Scan for the School Tour



### Languages taught at school

All the lessons are taught in French. English, Spanish and German are offered as 1<sup>st</sup> and 2<sup>nd</sup> foreign languages.



### School equipments

- Boarding house (board games, Tv...)
- Library
- Computers room
- Duty room
- Gymnasium, fitness center, dojo, athletic tracks...
- Art & Culture room



### Optional subjects

Options offered to students depending on availabilities upon arrival:

- Special-timetable sports section
- Plastic and visual arts



### Extracurricular clubs and activities

Basketball, horse riding, rugby, swimming, cycling, volleyball, badminton, fitness, athletics, outdoor activities, arts...

Options offered to students are subject to availabilities upon arrival. Lessons can be attended at school or in clubs depending on the activities. Registration and transportation fees may be charged to the student for activities attended outside school. Acceptance is at the discretion of the club.

Boarding 5 days/week



### The dorms

#### How many students per room?

- Girls dorms : rooms of 5-7 beds or individual boxes
- Boys dorms : rooms of 4-6 beds

#### Where are the dorms located?

- Girls' dorms: within the premises
- Boys' dorms: 8 min walking distance from school

#### Are outings allowed?

On Wednesday afternoons only from 1 pm to 5.30 pm

#### How is laundry managed?

Laundry done by host families during the weekend. Bed linen is provided by host families.

#### When are the meals taken?

Breakfast: 7 am  
Lunch: 12 pm to 1 pm  
Diner: 7 pm to 7.45 pm

#### Are there set times to do homework?

Yes. From 5.45 pm to 7 pm (compulsory) and from 7.30 pm to 8.30 pm or from 8.30 pm to 9.30 pm (optional)